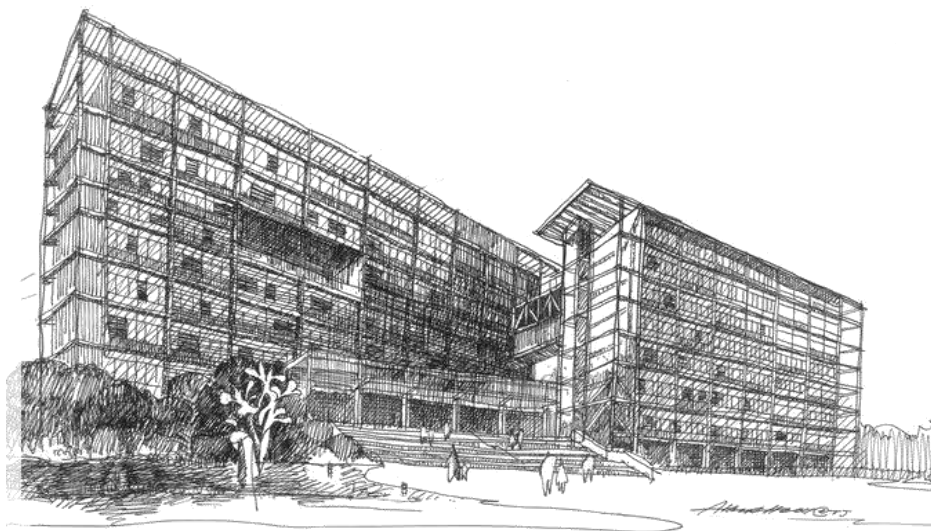

Tongji University College of Civil Engineering



Tongji University College of Civil Engineering
September 2023

Table of Contents

2023 Civil and Hydraulic (Master) -----	3
2023 Civil Engineering (PhD) -----	6
2022 Geological Resources and Geological Engineering (Master) -----	9
2022 Geological Resources and Geological Engineering (PhD) -----	11

2023 Civil and Hydraulic (Master)

Course List

Characteristics Of Course	Course Number	Course Name	Credits	Total Period	Semester	Compulsory or not	Remark
Public Degree Courses	2020578	Engineering Ethics 工程伦理*	2	36	Spring&Autumn	Yes	Chinese&English
	2300001	Chinese Language 第一外国语 (汉语)	3	72	Spring&Autumn	Yes	Compulsory for international students
	2900006	A General View of China 中国概况	3	54	Spring&Autumn	Yes	Compulsory for international students and students from Hong Kong, Macao and Taiwan
Professional Degree Courses (professional basic courses)	20001820017	Professional English 专业英语**	1	18	Spring&Autumn	Yes	
	2020563	Research progress and research method in Civil Engineering 土木工程研究进展与研究方	2	36	Autumn	Yes	

		法					
	2102002	Numerical Analysis 数值分析*	3	54	Spring& Autumn	No	
	20001820023	Dynamics of Structures 结构动力学*	3	54	Autumn	No	
	2020317	Advanced Rock Mechanics 高等岩石力学*	2	36	Spring& Autumn	No	
	2020418	Elasticity and Plasticity 弹塑性力学*	3	54	Autumn	No	
	2020451	Finite Element Method 有限单元法*	2	36	Spring	No	
Professional Degree Courses (professional core courses)	2020153	Advanced concrete structure theory 高等混凝土结构理论*	3	54	Spring	Yes for Structural Engineering, Disaster Prevention and Mitigation, Civil Engineering Information Technology	Chinese&English
	2020388	Advanced Theory of Steel Structures 高等钢结构理论**	2	36	Autumn	Yes for Structural Engineering	For international students
	2020405	Advanced Theory of Bridge Structures 高等桥梁结构理论*	3	54	Spring& Autumn	Yes for Bridge Engineering	Chinese&English
	2020533	Tunnel Mechanics and Engineering 隧道力学与工程*	2	36	Spring	No	Chinese&English
Professional Non-degree Courses	2020207	Wind Engineering for Structures 结构风工程学*	2	36	Spring	No	
	2020327	Earthquake engineering 地震工程学*	2	36	Spring	No	
	2020378	High-rise building 高层建筑结构*	2	36	Spring& Autumn	No	
	2020572	Structural Rehabilitation and Strengthening 建筑结构修复与加固**	2	34	Spring& Autumn	No	
	2020573	Traditional Building Structures in China 中国传统建筑结构**	2	34	Spring& Autumn	No	

	20001820006	Advanced Experimental Techniques of Structural Engineering 高等结构试验方法*	2	36	Spring	No	
	2020327	Earthquake engineering 地震工程学*	2	36	Spring	No	
	2020541	Composite Structures-II 组合结构-II*	1	17	Spring	No	
	2020542	Composite Structures-I 组合结构-I*	1	17	Spring	No	
	2020472	Probability analysis in civil engineering 土木工程的概率分析*	2	36	Spring& Autumn	No	
Compulsory courses	2900002	Dissertation Proposal 论文选题	1	0	Spring& Autumn	Yes	Arrange in the 3rd semester
	2900012	Tongji University Advanced Lectures for Graduate Students 同济高等讲堂	2	36	Spring& Autumn	Yes	Attend at least 16 times, complete before Interim Assessment
	2900013	Interim Assessment 中期考核	0	0	Spring& Autumn	Yes	Arrange in the 3rd semester, about 2 months after Dissertation Proposal
	20000140006	Specialized Field Practice 专业实践	6	108	Spring& Autumn	Yes	
	20002020001	Research writing and ethical norm 论文写作与学术规范	2	36	Spring& Autumn	Yes	Fill in the form for International Students

2023 Civil Engineering (PhD)

Course List

Characteristics Of Course	Course Number	Course Name	Credits	Total Period	Semester	Compulsory or not	Remark
Public Degree Courses	1300001	Chinese Language 第一外国语 (汉语)	2	36	Spring & Autumn	Yes	Compulsory for international students
	1900006	A General View of China 中国概况	3	54	Spring & Autumn	Yes	Compulsory for international students and students from Hong Kong, Macao and Taiwan
Professional degree courses	2020563	Research progress and research method in Civil Engineering 土木工程研究进展与研究方法	2	36	Autumn	Yes	
	2020153	Advanced concrete structure theory 高等混凝土结构理论*	3	54	Spring	No	Elective for international doctoral students only
	2020327	Earthquake engineering 地震工程学*	2	36	Spring	No	Elective for international doctoral students only
	2020388	Advanced Theory of Steel Structures 高等钢结构理论**	2	36	Autumn	No	Elective for international doctoral students only
	2020405	Advanced Theory of Bridge Structures	3	54	Spring & Autumn	No	Elective for international

		高等桥梁结构理论*					doctoral students only
	2020418	Elasticity and Plasticity 弹塑性力学*	3	54	Autumn	No	Elective for international doctoral students only
	2020533	Tunnel mechanics and engineering 隧道力学与工程*	2	36	Spring	No	Elective for international doctoral students only
	2020572	Structural Rehabilitation and Strengthening 建筑结构修复与加固**	2	34	Spring & Autumn	No	Only for Chinese-Italian dual degree students
	2020573	Traditional Building Structures in China 中国传统建筑结构**	2	34	Spring & Autumn	No	Only for Chinese-Italian dual degree students
Professional Non-degree courses	20001820006	Advanced Experimental Techniques of Structural Engineering 高等结构试验方法*	2	36	Spring	No	Elective for international doctoral students only
	20001820023	Dynamics of Structures 结构动力学*	3	54	Autumn	No	Elective for international doctoral students only
	2020317	Advanced Rock Mechanics 高等岩石力学*	2	36	Spring & Autumn	No	Elective for international doctoral students only
	2020451	Finite Element Method 有限单元法*	2	36	Spring	No	Elective for international doctoral students only
	2020472	Probability analysis in civil engineering 土木工程的概率分析	2	36	Spring & Autumn	No	Elective for international doctoral students only
	2020541	Composite Structures-II 组合结构-II*	1	17	Spring	No	Elective for international doctoral students only
	2020542	Composite Structures-I 组合结构-I*	1	17	Spring	No	Elective for international doctoral students only
	2102002	Numerical Analysis 数值分析*	3	54	Spring & Autumn	No	Elective for international doctoral students only

Compulsory courses	1900001	Dissertation Proposal 论文选题	1	18	Spring & Autumn	Yes	Arrange in the 3rd semester
	1900008	Interim Assessment 中期综合考核	3	54	Spring & Autumn	Yes	Arrange in the 4th semester
	1900010	Symposium on Periodical Result of Dissertation 论文阶段成果学术报告会	1	18	Spring & Autumn	Yes	
	20002020001	Research writing and ethical norm 论文写作与学术规范	2	36	Spring & Autumn	Yes	Fill in the form for International Students
	2900012	Tongji University Advanced Lectures for Graduate Students 同济高等讲堂	2	36	Spring & Autumn	Yes	Attend at least 16 times, complete before Interim Assessment

2022 Geological Resources and Geological Engineering (Master)

Course List

Characteristics of Course	Course No	Course Name	Credits	Total Period	Semester	Compulsory or not	Remark
Public degree courses	2300001	Chinese Language	3.0	72	Spring and autumn	Yes	Compulsory for international students
	2900006	A General View of China	3.0	54	Spring and autumn	Yes	Compulsory for international students and students from Hong Kong, Macao and Taiwan
Professional degree courses	2020537	Testing theories and monitoring techniques	2.0	36	Spring	Yes	Compulsory for international students
	2020445	Professional English	1.0	18	Autumn	Yes	Compulsory for international students
	2020011	Unsaturated Soil Mechanics	2.0	36	Autumn	No	Elective for International students
	2020280	Dynamics of Fluids in Porous Media	2.0	36	Spring	No	Elective for International students
	2020317	Advanced Rock Mechanics	2.0	36	Autumn	No	Elective for International students
	2020373	Soil Treatment and Underpinning II	2.0	36	Spring	No	Elective for International students
	2020422	Numerical Method of Geology Engineering	2.0	36	Spring	No	Elective for International students
	2020534	Geophysical exploration technology	2.0	36	Autumn	No	Elective for International students
	2020317	Advanced Rock Mechanics	2.0	36	Autumn	No	Elective for International students
	2020554	Environmental Engineering Geology	2.0	36	Spring and autumn	No	Elective for International students
	2102001	Matrix Analysis	3.0	54	Autumn	No	Elective one of four courses for International students
	2102002	Numerical Analysis	3.0	54	Spring and autumn	No	
	2102003	Stochastic Process	3.0	54	Autumn	No	
	2102006	Numerical method for partial	3.0	54	Autumn	No	

		differential equations (I)					
Professional non-degree courses	2020421	Earthquake Engineering Geology	2.0	36	Spring and autumn	No	Elective for International students
	2020535	New technology of Geosynthetic	2.0	36	Spring	No	Elective for International students
	2020575	Risk analysis in Geological Engineering	2.0	36	Autumn	No	Elective for International students
	2020418	Elasticity and Plasticity	3.0	36	Autumn	No	Elective for International students
Compulsory courses	20002020001	Research Writing and Ethical Norm	2.0	36	Spring and autumn	Yes	Fill in the form for International students
	2900002	Dissertation Proposal	1.0	0	Spring and autumn	Yes	Arrange in the 3rd semester
	2900012	Tongji University Advanced Lectures for Graduate Students	2.0	36	Spring and autumn	Yes	Attend at least 16 times and complete before Interim Assessment
	2900013	Interim Assessment	0.0	0	Spring and autumn	Yes	Arrange in the 3rd semester, about 2 months after Dissertation Proposal

2022 Geological Resources and Geological Engineering (PhD)

Course List

Characteristics Of Course	Course No	Course Name	Credits	Total Period	Semester	Compulsory	Remark
Public degree courses	1090122	Academic English Writing III	2.0	36	Spring and autumn	No	Elective one of two for international students
	1090123	Listening, Speaking and Critical Thinking For International Communication III	2.0	36	Spring and autumn	No	
	1300001	Chinese Language	2.0	36	Spring and autumn	No	Elective for international students
	1900006	A General View of China	3.0	54	Spring and autumn	No	Elective for international students and students from Hong Kong, Macao and Taiwan
Professional degree courses	1020116	Environmental Hydrogeology(II)	2.0	34	Spring and autumn	No	Elective for International doctoral students
	1020322	Unsaturated Soil Engineering Geology	2.0	34	Spring and autumn	No	Elective for International doctoral students
	New	Advanced Rock Mass Mechanics	2.0	34	Spring and autumn	No	Elective for International doctoral students
	2020327	Earthquake Engineering	2.0	36	Spring	No	Elective for International doctoral students
	2020533	Tunnel Mechanics and Engineering	2.0	36	Spring	No	Elective for International doctoral students
Professional non-degree courses	1020245	Advanced Underground Structure	2.0	36	Autumn	No	Elective for International doctoral students
	New	Advanced Geophysical Exploration Technology	2.0	34	Spring and autumn	No	Elective for International doctoral students
	1020254	Advanced Soil Mechanics	2.0	36	Autumn	No	Elective for International doctoral students
	2020418	Elasticity and Plasticity	3.0	54	Autumn	No	Elective for International doctoral students
	2020472	Probability Analysis in Civil Engineering	2.0	36	Spring and autumn	No	Elective for International doctoral students
Compulsory courses	1900001	Dissertation Proposal	1.0	18	Spring and autumn	Yes	Arrange in the 3rd semester

	1900008	Interim Assessment	3.0	54	Spring and autumn	Yes	Arrange in the 4th semester
	1900010	Symposium on Periodical Result of Dissertation	1.0	18	Spring and autumn	Yes	
	20002020001	Research Writing and Ethical Norm	2.0	36	Spring and autumn	Yes	Fill in the form for international students
	2900012	Tongji University Advanced Lectures for Graduate Students	2.0	36	Spring and autumn	Yes	Attend at least 16 times, and complete before Interim Assessment