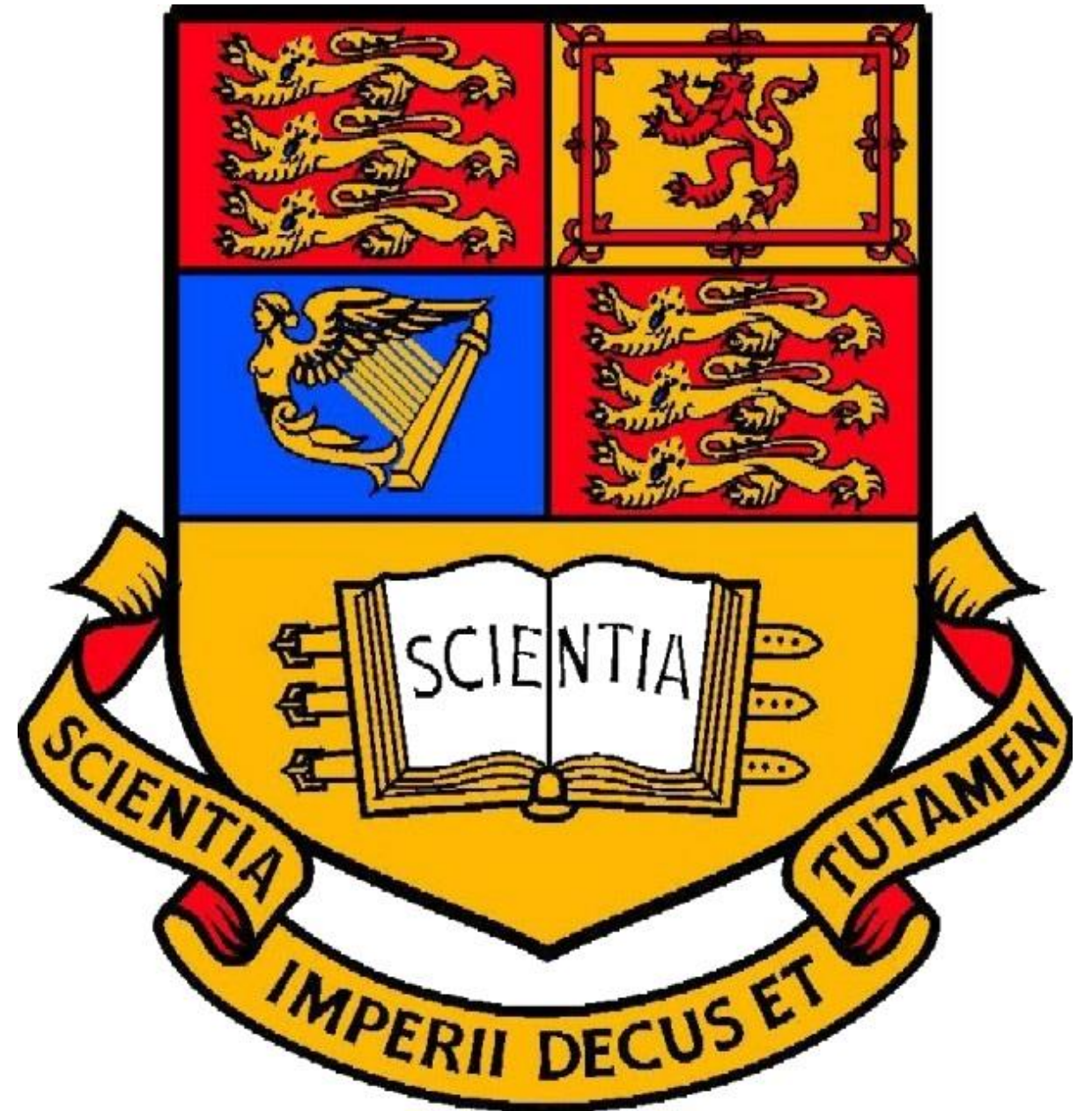


Imperial
College
London



MSc General Structural Engineering

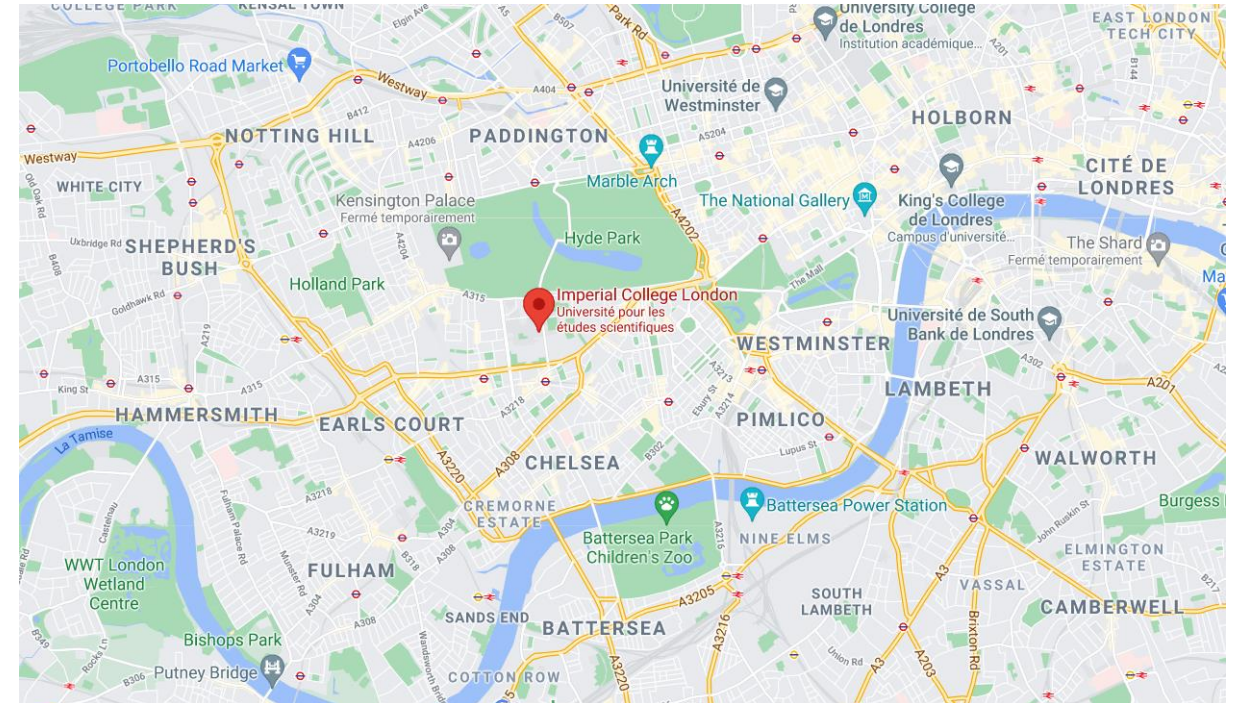


17 700 étudiants, 380 assos

4 facultés

- Engineering
- Medecine
- Natural sciences
- Business School

28 départements



MSc Program

3A agréée: candidature libre, lettres de recommandation, IELTS, frais de scolarité



Pass: 50%

Merit: 60%

Distinction: 70%

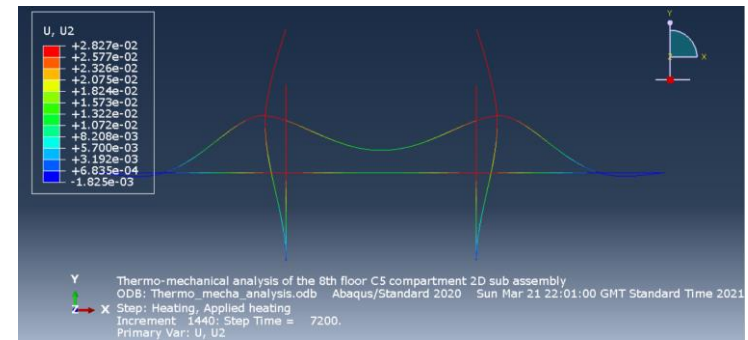
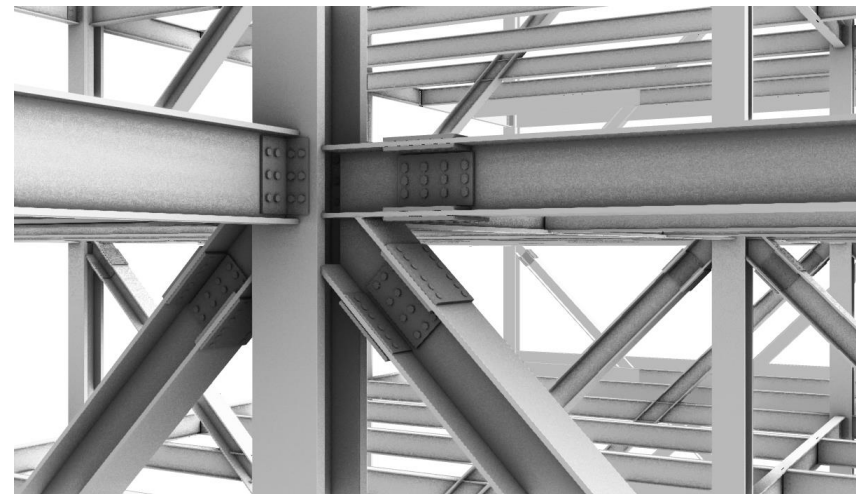
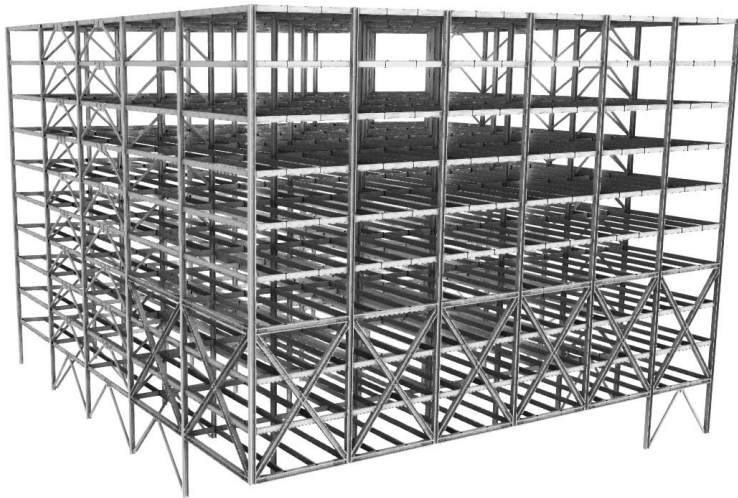
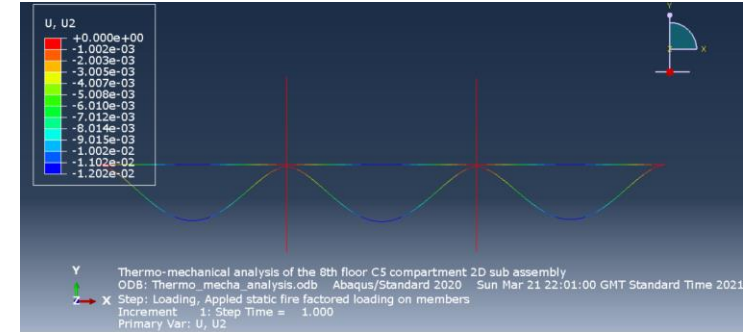
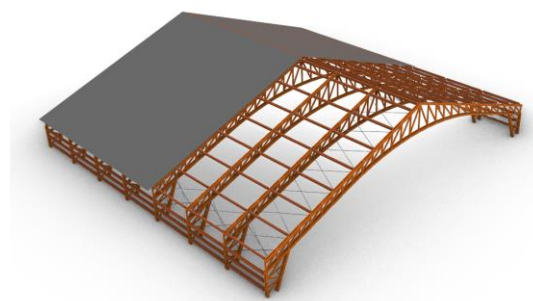
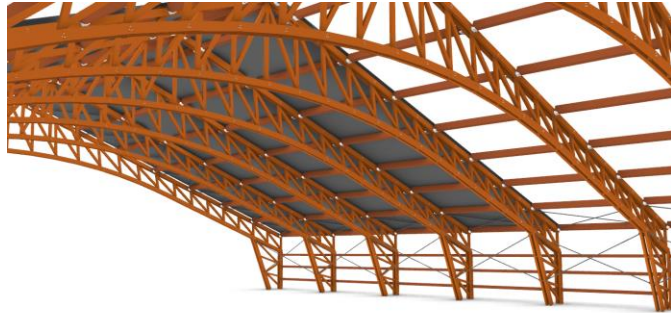
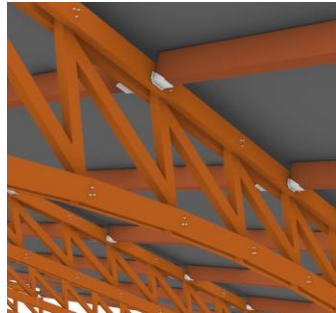
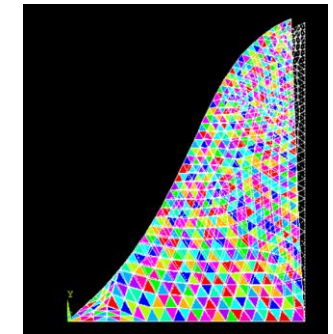
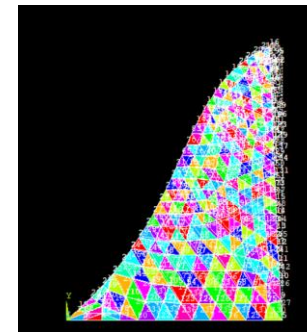
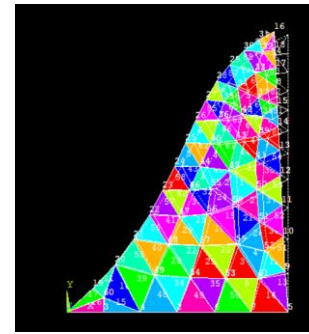
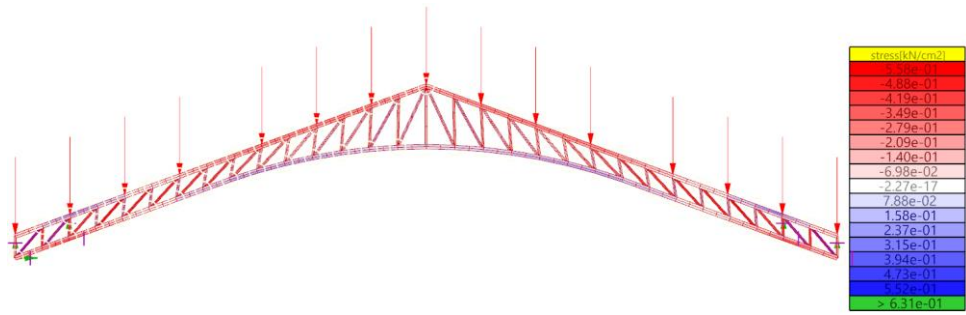
Civil & Environmental engineering

MSc General Structural Engineering

Modules S1	
Reinforced Concrete I	Core
Steel Components	Core
Structural Analysis	Core
Timber & Masonry Structures	Elective
Finite Element Analysis	Elective
Structural Dynamics	Elective
Structural Stability	Elective
Cementitious Materials	Elective
Prestressed concrete	Elective

Modules S2	
Reinforced Concrete II	Core
Design of Steel Buildings	Core
Design of Bridges	Elective
Structural Reliability	Elective
Concrete Materials	Elective
Nonlinear Structural Analysis	Elective
Theory of Shells	Elective
Plated Structures	Elective
Structural Fire Engineering	Elective

6 modules de 3h par semestre



Contacts

Lily Amsellem: Machine Learning

Charles Haskell : Civil Engineering

Jeremy Kalfoun: Aeronautical Engineering

Roland Tournade: Erasmus